

# SPIRAPAK Module: 4033-HFM-183-LPP

*Spiral Ultrafiltration Module for Cathodic Electrocoat Paint*

## PRODUCT DESCRIPTION

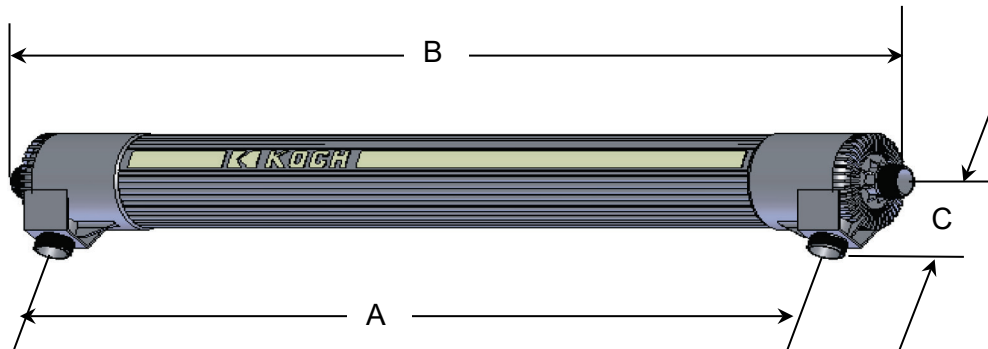
<b>KSS Part Number:</b>	0700786
<b>Membrane Chemistry:</b>	PVDF
<b>Membrane Type:</b>	HFM (positive charge)
<b>Membrane Area:</b>	59 ft <sup>2</sup> (5.5 m <sup>2</sup> )
<b>Construction:</b>	Spiral wound element with integrated PVC housing
<b>Seal:</b>	EPDM
<b>Feed Spacer Thickness:</b>	0.030" (0.8 mm)

## OPERATING AND DESIGN INFORMATION\*

<b>Maximum Inlet Pressure:</b>	80 psi @110°F (5.5 bar @ 43°C)
<b>Maximum Operating Temperature:</b>	125°F (52°C)
<b>Allowable pH – Continuous Operation:</b>	3 - 7 @ 125°F (52°C)
<b>Allowable pH – Short Term Cleaning:</b>	2 - 7 @125°F (52°C)
<b>Maximum Feed Side Pressure Drop:</b>	40 psi @ 125°F (2.8 bar @ 52°C)
<b>Maximum Permeate Pressure:</b>	5 psi (0.3 bar)

\*Consult KSS Process Technology Group for specific information.

## NOMINAL DIMENSIONS



A		B		C		Working Weight		Permeate and Process Connections
inches	(mm)	inches	(mm)	inches	(mm)	lbs	(kg)	
37	(940)	44	(1,120)	2.5	(64)	45	(20)	1 ¼ NPSM

OPERATING GUIDELINES

**Membrane Incompatibility**

Prior to exposing the membrane to any chemical, the chemical should be reviewed by Koch Membrane Systems. Aside from the listed chemicals below, synthetic coolants, semi-synthetic coolants, kerosenes, naphtha, gasoline, floc polymers may affect membrane performance.

**Chemicals that should be avoided include the following:**

- **Aprotic Solvent** (e.g., Dimethyl Formamide, Dimethyl Acetamide, N-Methyl Pyrolidine, etc.)
- **Chlorinated Solvents** (e.g., Methylene Chloride, Chloroform, Carbon Tetrachloride, etc.)
- **Ketones** (e.g., Acetone, Diacetone Alcohol, etc.)
- **Silicones** or Silicone based Defoamers (e.g., Siloxane)

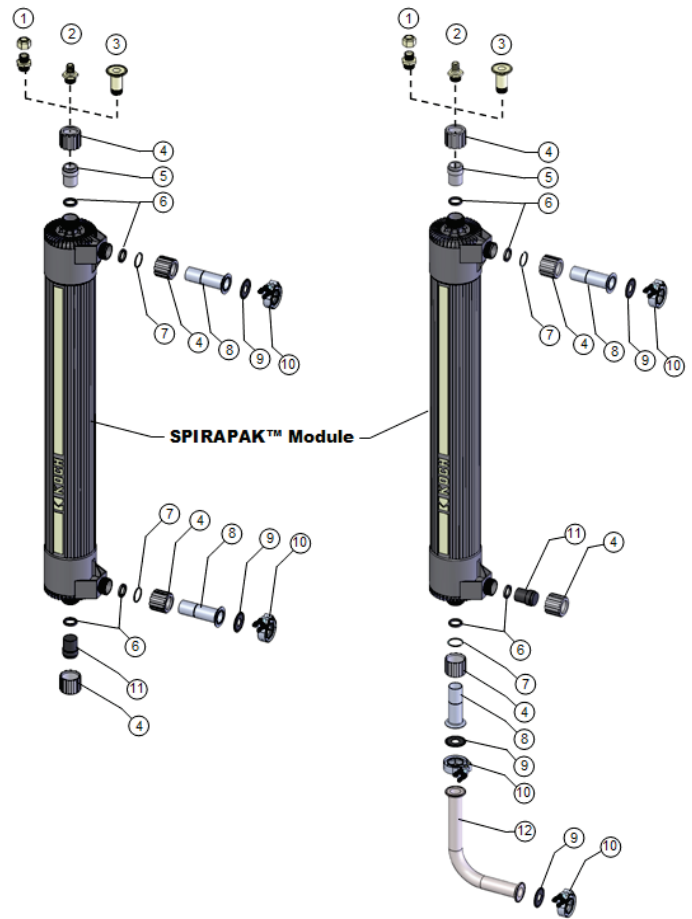
OPTIONS OF SPIRAPAK MODULE ASSEMBLY

Item	Description	Qty/Unit	KPN
1	Permeate connection Option #1 – 5/8" OD Rigid Tubing	1	0231208
2	Permeate connection Option #2 – 1/2" ID Flex hose	1	0231207
3	Permeate connection Option #3 – 1 1/2" Sanitary ferrule	1	0212300
4	Nut	4	0020281
5	Permeate adapter xcvgbhn	1	0030375
6	Seal washer	4	0020370
7	Retaining ring	2	0020310
8	Process adapter	2	0216003
9	1 1/2" Sanitary seal	2	0090400
10	1 1/2" Sanitary coupling	1	0210465
11	Process plug	1 or 2	0030040
12	Product Extension	1	0216002

Note: Generation II End Cap Design show

**Service and Ongoing Technical Support**

Koch Separation Solutions Inc. has an experienced staff of professionals available to assist end-users and OEMs for optimization of existing systems and support the



*The information contained in this publication is believed to be accurate and reliable, but is not to be construed as implying any warranty or guarantee of performance. We assume no responsibility, obligation or liability for results obtained or damages incurred through the application of the information contained herein. Refer to Standard Terms and Conditions of Sale and Performance Warranty documentation for additional information*

**Koch Separation Solutions, Inc.** 850 Main Street, Wilmington, MA 01887  
 Main: +1-978-694-7000 • Fax: +1-978-657-5208 • Toll Free: +1-888-677-5624

For complete contact information and listing of our global locations, visit [www.kochseparation.com](http://www.kochseparation.com)

©2020 Koch Separation Solutions, Inc. All rights reserved worldwide. For related trademark information, visit [www.kochseparation.com/legal](http://www.kochseparation.com/legal).