

# SPIRAPAK PLUS Modules

High Productivity Potted Ultrafiltration Spiral Modules for Electrocoat Paint

## PRODUCT DESCRIPTION

<b>Membrane Chemistry:</b>	PVDF
<b>Membrane Type:</b>	HFM-183 (positive charge)
<b>Construction:</b>	Spiral wound element with integrated PVC housing
<b>Seal:</b>	EPDM

## NOMINAL SPECIFICATIONS

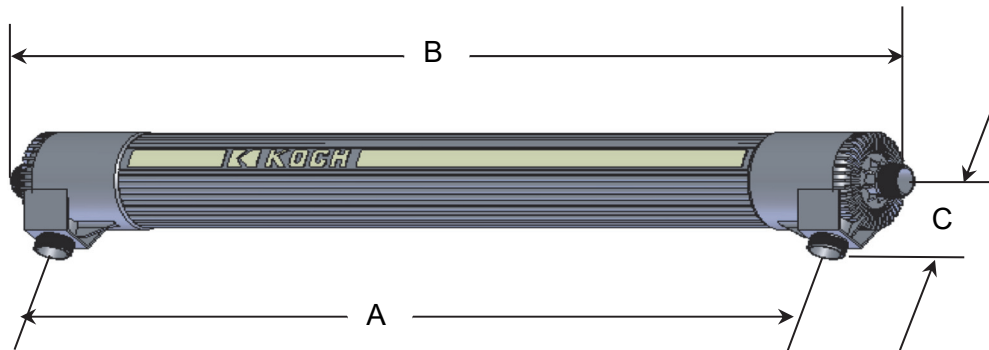
Part Number	Model	Feed Spacer mil (mm)	Membrane Area ft <sup>2</sup> (m <sup>2</sup> )
0700787	SPIRAPAK PLUS 4033-M183-LPP	30 (0.8)	63 (5.9)
0700788	SPIRAPAK PLUS 4033-M183-VPP	43 (1.1)	54 (5.0)
0750783	SPIRAPAK PLUS 4038-M183-LPP3	30 (0.8)	81 (7.5)
0750795	SPIRAPAK PLUS 4038-M183-VPP3	46 (1.2)	65 (6.0)

## OPERATING AND DESIGN INFORMATION\*

<b>Maximum Inlet Pressure:</b>	80 psi @110°F (5.5 bar @ 43°C)
<b>Maximum Operating Temperature:</b>	125°F (52°C)
<b>Allowable pH – Continuous Operation:</b>	3 - 7 @ 125°F (52°C)
<b>Allowable pH – Short Term Cleaning:</b>	2 - 7 @ 125°F (52°C)
<b>Maximum Feed Side Pressure Drop:</b>	40 psi @ 125°F (2.8 bar @ 52°C)
<b>Maximum Permeate Pressure:</b>	5 psi (0.3 bar)

\*Consult KSS Process Technology Group for specific information.

## NOMINAL DIMENSIONS



Model	A		B		C		Working Weight		Permeate/Process Connections
	inches	(mm)	inches	(mm)	inches	(mm)	lbs	(kg)	
SPIRAPAK PLUS 4033	37	(940)	44	(1,120)	2.5	(64)	45	(20)	1 ¼ NPSM
SPIRAPAK PLUS 4038	50	(1,260)	56	(1,430)	2.5	(64)	45	(20)	1 ¼ NPSM

OPERATING GUIDELINES

**Membrane Incompatibility**

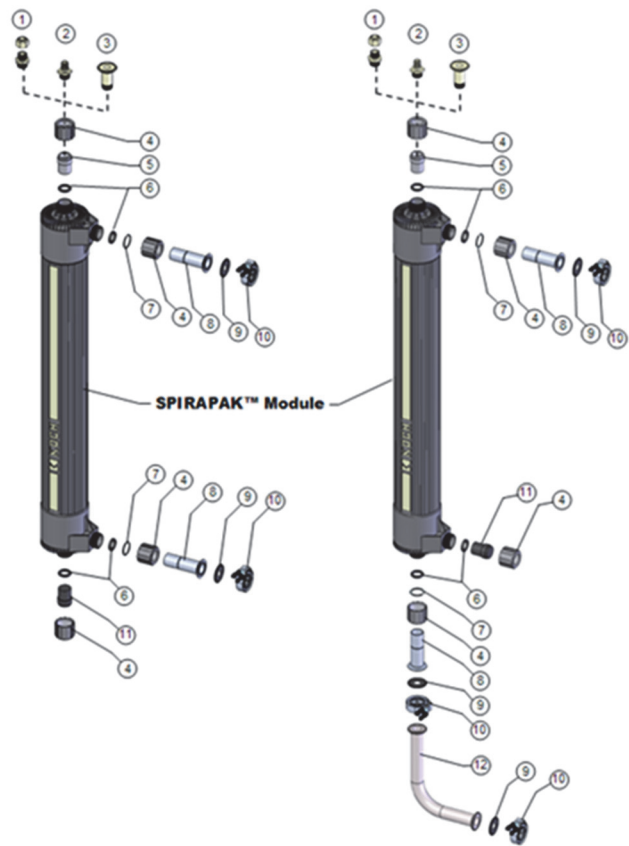
Prior to exposing the membrane to any chemical, the chemical should be reviewed by Koch Separation Solutions. Aside from the listed chemicals below, synthetic coolants, semi-synthetic coolants, kerosenes, naphtha, gasoline, floc polymers may affect membrane performance.

**Chemicals that should be avoided include the following:**

- **Aprotic Solvent** (e.g. Dimethyl Formamide, Dimethyl Acetamide, N-Methyl Pyrolidine, etc.)
- **Chlorinated Solvents** (e.g., Methylene Chloride, Chloroform, Carbon Tetrachloride, etc.)
- **Ketones** (e.g. Acetone, Diacetone Alcohol, etc.)
- **Silicones** or Silicone based Defoamers (e.g. Siloxane)

OPTIONS OF SPIRAPAK MODULE ASSEMBLY

Item	Description	Qty/Unit	KPN
1	Permeate Connection Option #1 – 5/8" OD Rigid Tubing	1	0231208
2	Permeate Connection Option #2 – 1/2" ID Flex Hose	1	0231207
3	Permeate Connection Option #3 – 1 1/2" Sanitary Ferrule	1	0212300
4	Nut	4	0020281
5	Permeate Adapter	1	0030375
6	Seal Washer	4	0020370
7	Retaining Ring	2	0020310
8	Process Adapter	2	0216003
9	1 1/2" Sanitary Seal	2	0090400
10	1 1/2" Sanitary Coupling	1	0210465
11	Process Plug	1 or 2	0030040
12	Product Extension	1	0216002



**Service and Ongoing Technical Support**

Koch Separation Solutions, Inc. has an experienced staff of professionals available to assist end-users and OEMs for optimization of existing systems and support the development of new applications. Along with the availability of supplemental technical bulletins, Koch Separation Solutions, Inc. also offers a complete line of KOCHKLEEN® cleaning chemicals.

*The information contained in this publication is believed to be accurate and reliable, but is not to be construed as implying any warranty or guarantee of performance. We assume no responsibility, obligation or liability for results obtained or damages incurred through the application of the information contained herein. Refer to Standard Terms and Conditions of Sale and Performance Warranty documentation for additional information*

**Koch Separation Solutions, Inc.** 850 Main Street, Wilmington, MA 01887  
 Main: +1-978-694-7000 • Fax: +1-978-657-5208 • Toll Free: +1-888-677-5624

For complete contact information and listing of our global locations, visit [www.kochseparation.com](http://www.kochseparation.com)

©2020 Koch Separation Solutions, Inc. All rights reserved worldwide. For related trademark information, visit [www.kochseparation.com/legal](http://www.kochseparation.com/legal).